

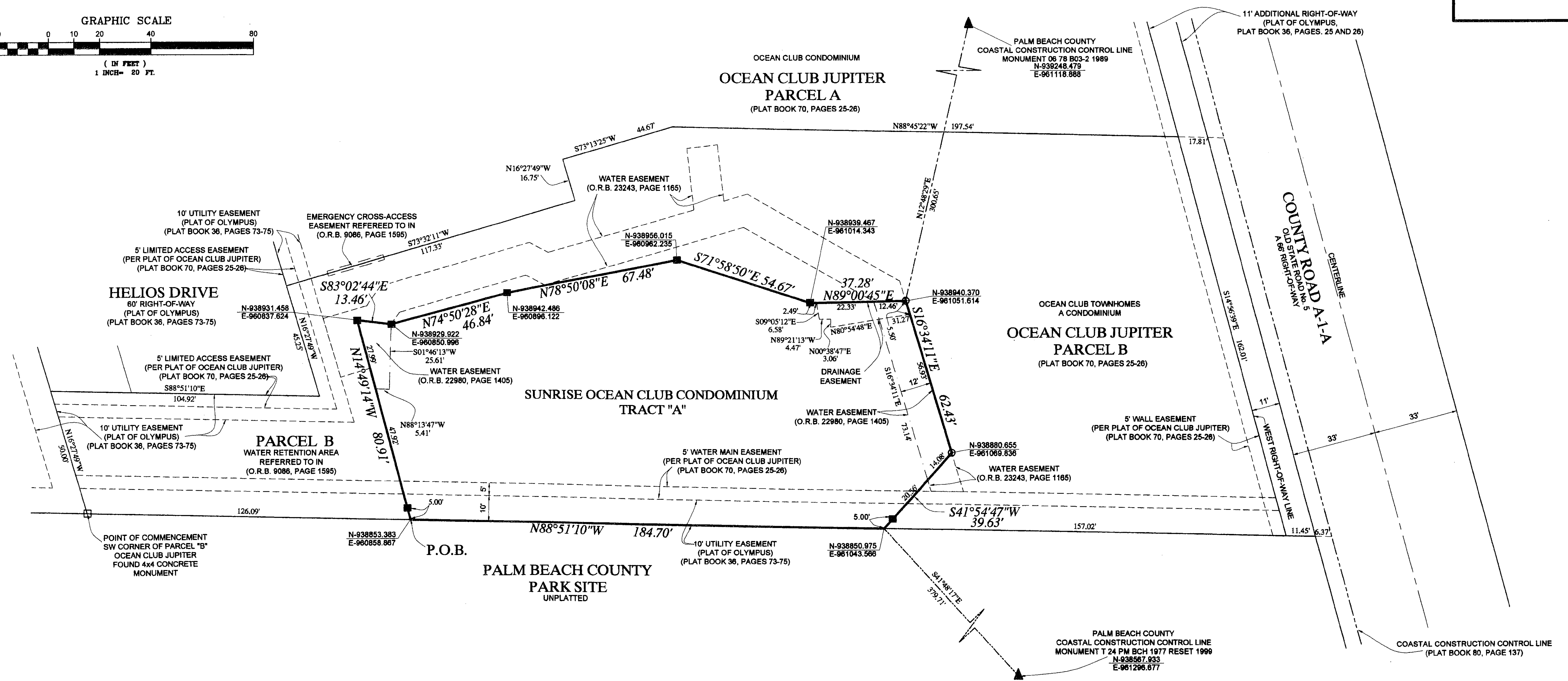
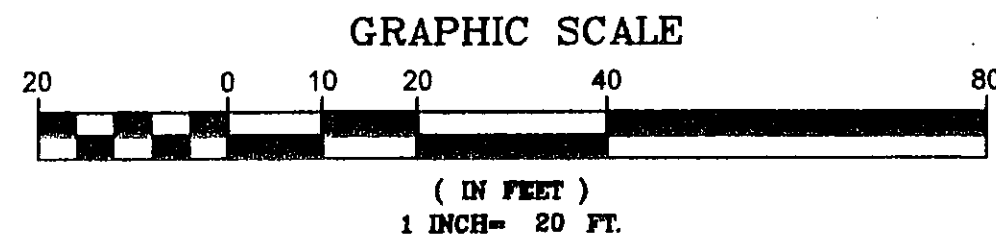
# SUNRISE OCEAN CLUB CONDOMINIUM

BEING A REPLAT OF A PORTION OF PARCEL B OF THE PLAT OF OCEAN CLUB JUPITER,  
AS RECORDED IN PLAT BOOK 70, PAGE 25 AND 26  
AND LYING IN SECTION 8, TOWNSHIP 41 SOUTH, RANGE 43 EAST,  
TOWN OF JUPITER, PALM BEACH COUNTY, FLORIDA.

JUNE 2009

9

- LEGEND**
- SET MAG NAIL/DISC LS# 2439
  - SET 4" x 4" CONCRETE PERMANENT REFERENCE MONUMENT LS# 2439
  - P.O.B. POINT OF BEGINNING
  - CENTERLINE
  - O.R.B. OFFICIAL RECORD BOOK



**SHEET 2 OF 2**  
**DAILEY AND ASSOCIATES, INC.**  
Surveying and Mapping  
112 N. U.S. Highway No. 1  
Tequesta, FL 33469  
Phone: (561) 746-8424  
BUSINESS LICENSE: LB# 2799